

**PLEASE CHECK WWW.MOLEX.COM FOR LATEST PART INFORMATION**

**Part Number:** **0022503165**  
**Status:** **Active**  
**Overview:** kk  
**Description:** 2.54mm (.100") KK® IDT Double Cantilever Contact, 16 Circuits, Tin (Sn), Feed-Through, Friction Ramp and Polarizing Rib, Green ID Strip

**Documents:**

[3D Model](#) [Product Specification PSX-7690S \(PDF\)](#)  
[Drawing \(PDF\)](#) [RoHS Certificate of Compliance \(PDF\)](#)

**Agency Certification**

UL E29179

**General**

Product Family IDT and Solder Connectors  
 Series 7720  
 Comments Version H  
 Crimp Quality Equipment Yes  
 Overview kk  
 Product Name KK®

**Physical**

Circuits (Loaded) 16  
 Circuits (maximum) 16  
 Color - Resin Natural  
 Durability (mating cycles max) 5  
 Flammability 94V-2  
 Gender Female  
 Glow-Wire Compliant No  
 Lock to Mating Part None  
 Material - Metal Brass  
 Material - Plating Mating Tin  
 Material - Plating Termination Tin  
 Material - Resin Nylon  
 Number of Rows 1  
 Packaging Type Bag  
 Panel Mount No  
 Pitch - Mating Interface (in) 0.100 In  
 Pitch - Mating Interface (mm) 2.54 mm  
 Pitch - Term. Interface (in) 0.100 In  
 Pitch - Term. Interface (mm) 2.54 mm  
 Polarized to Mating Part Yes  
 Stackable No  
 Temperature Range - Operating 0°C to +50°C  
 Termination Interface: Style IDT or Pierce  
 Wire Size AWG 24 Stranded, 26 Solid, 26 Stranded Topcoat

**Electrical**

Current - Maximum per Contact 4A  
 Voltage - Maximum 250V

**Solder Process Data**

Lead-free Process Capability Wave Capable (TH only)

**Material Info**

Old Part Number 7720SC16H

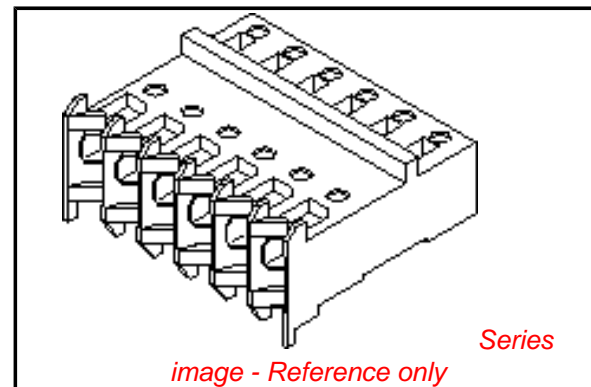


image - Reference only

**EU RoHS**

**ELV and RoHS Compliant**  
**REACH SVHC**  
 Not Reviewed  
**Halogen-Free Status**  
**Not Reviewed**

**China RoHS**



**Need more information on product environmental compliance?**

Email [productcompliance@molex.com](mailto:productcompliance@molex.com)  
 For a multiple part number RoHS Certificate of Compliance, [click here](#)

Please visit the [Contact Us](#) section for any non-product compliance questions.

**Search Parts in this Series**

7720Series

**Application Tooling | FAQ**

*Tooling specifications and manuals are found by selecting the products below. Crimp Height Specifications are then contained in the Application Tooling Specification document.*

**Global**

Description	Product #
Insertion Tool for	<a href="#">0638133504</a>
2.54mm (.100") Pitch	
KK® IDT Crimp	
Terminals	
IDT - Semi-automatic	<a href="#">0011200412</a>
- Bench-Top	
Terminator	

**Reference - Drawing Numbers**

Packaging Specification

Product Specification

Sales Drawing

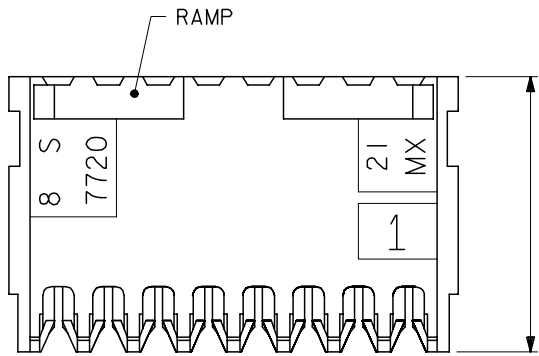
PK-7720-100

PSX-7690S

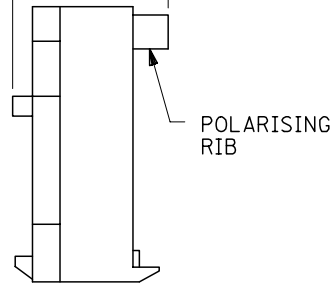
SDA-7720S-\*N\*

This document was generated on 05/18/2010

**PLEASE CHECK [WWW.MOLEX.COM](http://WWW.MOLEX.COM) FOR LATEST PART INFORMATION**



(1.02) → (5.08) → (1.78)  
 .040 → .200 → .070



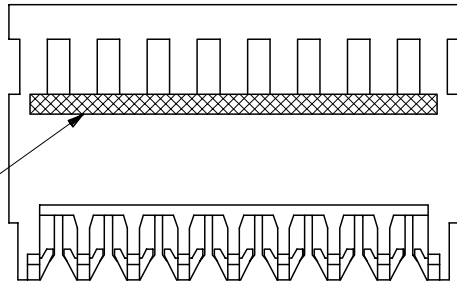
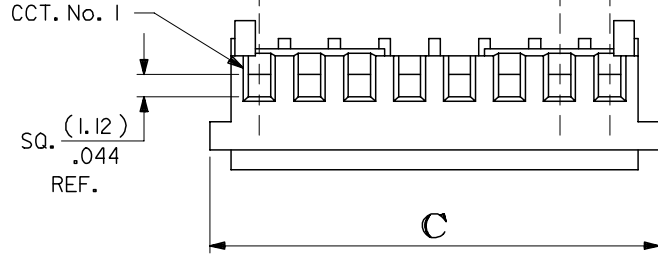
**A-7720S- \* N \* - \***  
 BASE No.      VOID LOC'n.  
 TERMINAL DESIGNATION  
 No. OF CCTS.

HOUSING CONFIGURATION

- WITHOUT BACKWALL
- A. HSG, NO RAMP, NO POL. RIBS
  - B. WITH RAMP
  - C. WITH RAMP AND POL. RIB
- WITH BACKWALL
- D. HSG, NO RAMP, NO POL. RIB
  - E. WITH RAMP
  - F. WITH RAMP AND POL. RIB

NOTES:

- MATERIAL: NYLON 6/6, 94V-2, NATURAL.
- THIS ASSY. IS FOR USE WITH (0.64)/.025 SQ. OR RD. PINS. INSERTION DEPTH (6.10-7.87)/.240-.310
- THIS ASSY. WILL ACCOMMODATE (1.42)/.056 MAX. INSULATION DIA.
- COLOURED STRIPE ON FULL LENGTH OF RIB DENOTES WIRE GAUGE (SEE CHART).
- VOIDS ARE AVAILABLE WITH PIN WINDOWS MOULDED CLOSED.
- ALL TERMINALS HAVE CAT-EARS CONFIGURATION EXCEPT WHEN GOLD PLATED.
- FOR STANDARD PARTS SEE SHEETS 2&3.
- FOR NON STANDARD PLATING OPTIONS SEE SHEET 4.



NO OF CCTS	DIMn. A	DIMn. C
2	( 2.54 ) / .100	( 7.59 ) / .299
3	( 5.08 ) / .200	( 10.13 ) / .399
4	( 7.62 ) / .300	( 12.67 ) / .499
5	( 10.16 ) / .400	( 15.21 ) / .599
6	( 12.70 ) / .500	( 17.75 ) / .699
7	( 15.24 ) / .600	( 20.29 ) / .799
8	( 17.78 ) / .700	( 22.83 ) / .899
9	( 20.32 ) / .800	( 25.37 ) / .999
10	( 22.86 ) / .900	( 27.91 ) / 1.099
11	( 25.40 ) / 1.000	( 30.45 ) / 1.199
12	( 27.94 ) / 1.100	( 32.99 ) / 1.299
13	( 30.48 ) / 1.200	( 35.53 ) / 1.399
14	( 33.02 ) / 1.300	( 38.07 ) / 1.499
15	( 35.56 ) / 1.400	( 40.61 ) / 1.599
16	( 38.10 ) / 1.500	( 43.15 ) / 1.699
17	( 40.64 ) / 1.600	( 45.69 ) / 1.799
18	( 43.18 ) / 1.700	( 48.23 ) / 1.899
19	( 45.72 ) / 1.800	( 50.77 ) / 1.999
20	( 48.26 ) / 1.900	( 53.31 ) / 2.099
21	( 50.80 ) / 2.000	( 55.85 ) / 2.199
22	( 53.34 ) / 2.100	( 58.39 ) / 2.299
23	( 55.88 ) / 2.200	( 60.93 ) / 2.399
24	( 58.42 ) / 2.300	( 63.47 ) / 2.499
25	( 60.96 ) / 2.400	( 66.01 ) / 2.599
26	( 63.50 ) / 2.500	( 68.55 ) / 2.699
27	( 66.04 ) / 2.600	( 71.09 ) / 2.799
28	( 68.58 ) / 2.700	( 73.63 ) / 2.899

REVISION UPDATE EC NO: E2007-0125 DRW: DWASZKI/EMI/CZ/2006/10/10 CHK'D: MORIARTY 2006/10/11 APPR: DENNEHY 2006/10/11	QUALITY SYMBOLS	GENERAL TOLERANCES (UNLESS SPECIFIED)	DIMENSION STYLE	SCALE	DESIGN UNITS	THIRD ANGLE PROJECTION	
	▼=0 ▽=0	mm      INCH	MM/IN	4:1	METRIC		
		4 PLACES ±--- ±---	DRAWN BY DATE	TITLE	HOUSING I.D. CONNECTOR (2.54)/.100 CENTRES NON\$		
		3 PLACES ±--- ±.005	GCH	CHECKED BY DATE			
	2 PLACES ±0.13 ±.010	D. MORIARTY	APPROVED BY DATE	MOLEX INCORPORATED DOCUMENT NO. SDA-7720S-*N*      SHEET NO. 1 OF 4			
	1 PLACE ±0.25 ±---	J. DENNEHY					
	ANGULAR ± 2 °	MATERIAL NO.	SIZE				
		DRAFT WHERE APPLICABLE MUST REMAIN WITHIN DIMENSIONS	SEE CHART				
			THIS DRAWING CONTAINS INFORMATION THAT IS PROPRIETARY TO MOLEX INCORPORATED AND SHOULD NOT BE USED WITHOUT WRITTEN PERMISSION				

PART NO.	ENG. NO.	CCTS.	TERMINAL	I.D. STRIPE	PLTG.
22-50-3025	A-7720S-C 2H	2	40125-H(P918)	GREEN	HOT TIN DIP (1-3µM)/000040-000120
↑ 3035	↑ C 3H	3	↑	↑	
3045	C 4H	4			
3055	C 5H	5			
3065	C 6H	6			
3075	C 7H	7			
3085	C 8H	8			
3095	C 9H	9			
3105	C 10H	10			
3115	C 11H	11			
3125	C 12H	12			
3135	C 13H	13			
3145	C 14H	14			
3155	C 15H	15			
3165	C 16H	16			
3175	C 17H	17			
3185	C 18H	18			
3195	C 19H	19			
3205	C 20H	20			
3215	C 21H	21			
3225	C 22H	22			
3235	C 23H	23			
3245	C 24H	24			
3255	C 25H	25			
3265	C 26H	26			
↓ 3275	↓ C 27H	27	↓	↓	
22-50-3285	A-7720S-C28H	28	40125-H(P918)	GREEN	

**NOTE:**  
1. 18 - 28 CIRCUITS ARE NON-STANDARD.

CORRECT PLATING EC NO: E2007-0125 DRWN: WASZKI EWI (CZ 2006/10/10) CHKD: MORIARTY 2006/10/11 APPR: DENNEHY 2006/10/11	QUALITY SYMBOLS	GENERAL TOLERANCES (UNLESS SPECIFIED)	DIMENSION STYLE MM ONLY	SCALE ---	DESIGN UNITS METRIC	THIRD ANGLE PROJECTION	
	▼=0 ▽=0	4 PLACES ±--- 3 PLACES ±--- 2 PLACES ±--- 1 PLACE ±--- ANGULAR ±---°	mm    INCH ±---    ±--- ±---    ±--- ±---    ±--- ±---    ±---	DRAWN BY MCC DATE CHECKED BY D. MORIARTY DATE APPROVED BY J. DENNEHY DATE	TITLE	INSULATION DISPLACEMENT CONNECTOR (2.54)/.100 CENTRES	MOLEX INCORPORATED SHEET NO. 2 OF 4
	DRAFT WHERE APPLICABLE MUST REMAIN WITHIN DIMENSIONS	SEE CHART	DOCUMENT NO.	SDA-7720S-*N*			
	SIZE A3	THIS DRAWING CONTAINS INFORMATION THAT IS PROPRIETARY TO MOLEX INCORPORATED AND SHOULD NOT BE USED WITHOUT WRITTEN PERMISSION					